

ENDOSCOPE ACCESSORIES

Biopsy Forceps,
Cleaning Brushes,
Endoscope
Mouthpieces,



Contents

Endoscope Accessories

MEDOGEN INC.

Single use

Disposable Biopsy Forces

- Disposable Oval Cups Biopsy Forceps
- Disposable Oval Cups with Needle Biopsy Forceps
- Disposable Alligator Cups Biopsy Forceps
- Disposable Alligator Cups with Needle Biopsy Forceps

Disposable Cleaning Brushes

- Disposable Double Ended Cleaning Brush
- Disposable Double Ended Fan-Tip Cleaning Brush
- Disposable Single Ended Cleaning Brush
- Disposable Single Ended Fan-Tip Cleaning Brushes
- Disposable Port Hole Cleaning Brush
- Disposable Port Hole Fan-Tip Cleaning Brush

Disposable Endoscope Mouthpieces

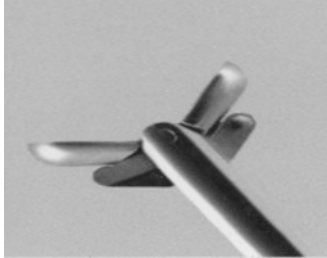
- Disposable Endoscope Mouthpiece
- Disposable Endoscope Mouthpiece without Retaining Strap
- Disposable Endoscope Mouthpiece with Retaining Strap

Biopsy Forceps

Single use

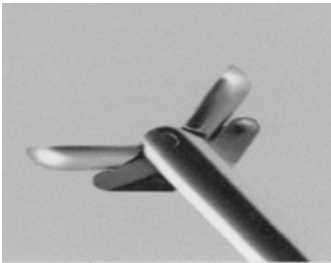
Standard Capacity Oval Cup

Oval. Fenestrated cups for deeper biopsy.



Coated

Product Co.	Max.Insertion Portion Diameter & Working length	Minimum Working Channel (mm)	Color Code	Min.Packaging
BF-A1.8X1200	1.8 X 1200	ϕ 2.0	●	20/box
BF-A1.8X1600	1.8 X 1600	ϕ 2.0	●	20/box
BF-A1.8X1800	1.8 X 1800	ϕ 2.0	●	20/box
BF-A2.4X1200	2.4 X 1200	ϕ 2.8	●	20/box
BF-A2.4X1600	2.4 X 1600	ϕ 2.8	●	20/box
BF-A2.4X1800	2.4 X 1800	ϕ 2.8	●	20/box
BF-A2.4X2300	2.4 X 2300	ϕ 2.8	●	20/box
BF-A2.4X2700	2.4 X 2700	ϕ 2.8	●	20/box



Un -Coated

Product Co.	Max.Insertion Portion Diameter & Working length	Minimum Working Channel (mm)	Color Code	Min.Packaging
BF-A1.8X1200U	1.8 X 1200	ϕ 2.0	●	20/box
BF-A1.8X1600U	1.8 X 1600	ϕ 2.0	●	20/box
BF-A1.8X1800U	1.8 X 1800	ϕ 2.0	●	20/box
BF-A2.4X1200U	2.4 X 1200	ϕ 2.8	●	20/box
BF-A2.4X1600U	2.4 X 1600	ϕ 2.8	●	20/box
BF-A2.4X1800U	2.4 X 1800	ϕ 2.8	●	20/box
BF-A2.4X2300U	2.4 X 2300	ϕ 2.8	●	20/box
BF-A2.4X2700U	2.4 X 2700	ϕ 2.8	●	20/box

Standard Capacity Oval Cup w/Needle

Oval. Fenestrated cups with needle



Coated

Product Co.	Max.Insertion Portion Diameter & Working length	Minimum Working Channel (mm)	Color Code	Min.Packaging
BF-B2.4X1200	2.4 X 1200	ϕ 2.8	●	20/box
BF-B2.4X1600	2.4 X 1600	ϕ 2.8	●	20/box
BF-B2.4X1800	2.4 X 1800	ϕ 2.8	●	20/box
BF-B2.4X2300	2.4 X 2300	ϕ 2.8	●	20/box
BF-B2.4X2700	2.4 X 2700	ϕ 2.8	●	20/box



Un -Coated

Product Co.	Max.Insertion Portion Diameter & Working length	Minimum Working Channel (mm)	Color Code	Min.Packaging
BF-B2.4X1200U	2.4 X 1200	ϕ 2.8	●	20/box
BF-B2.4X1600U	2.4 X 1600	ϕ 2.8	●	20/box
BF-B2.4X1800U	2.4 X 1800	ϕ 2.8	●	20/box
BF-B2.4X2300U	2.4 X 2300	ϕ 2.8	●	20/box
BF-B2.4X2700U	2.4 X 2700	ϕ 2.8	●	20/box

Biopsy Forceps

Single use

Standard Capacity Alligator Cup w/Needle

Serrated. Alligator cups



Coated

Product Co.	Max.Insertion Portion Diameter & Working length	Minimum Working Channel (mm)	Color Code	Min.Packaging
BF-C1.8X600	1.8 X 600	ϕ 2.0	pink	20/box
BF-C1.8X1200	1.8 X 1200	ϕ 2.0	red	20/box
BF-C1.8X1600	1.8 X 1600	ϕ 2.0	green	20/box
BF-C1.8X1800	1.8 X 1800	ϕ 2.0	blue	20/box
BF-C2.4X1200	2.4 X 1200	ϕ 2.8	red	20/box
BF-C2.4X1600	2.4 X 1600	ϕ 2.8	green	20/box
BF-C2.4X1800	2.4 X 1800	ϕ 2.8	blue	20/box
BF-C2.4X2300	2.4 X 2300	ϕ 2.8	orange	20/box
BF-C2.4X2700	2.4 X 2700	ϕ 2.8	purple	20/box



Un -Coated

Product Co.	Max.Insertion Portion Diameter & Working length	Minimum Working Channel (mm)	Color Code	Min.Packaging
BF-C1.8X1200U	1.8 X 1200	ϕ 2.0	red	20/box
BF-C1.8X1600U	1.8 X 1600	ϕ 2.0	green	20/box
BF-C1.8X1800U	1.8 X 1800	ϕ 2.0	blue	20/box
BF-C2.4X1200U	2.4 X 1200	ϕ 2.8	red	20/box
BF-C2.4X1600U	2.4 X 1600	ϕ 2.8	green	20/box
BF-C2.4X1800U	2.4 X 1800	ϕ 2.8	blue	20/box
BF-C2.4X2300U	2.4 X 2300	ϕ 2.8	orange	20/box
BF-C2.4X2700U	2.4 X 2700	ϕ 2.8	purple	20/box

Standard Capacity Alligator Cup w/Needle

Serrated. Alligator cups with needle



Coated

Product Co.	Max.Insertion Portion Diameter & Working length	Minimum Working Channel (mm)	Color Code	Min.Packaging
BF-D2.4X1200	2.4 X 1200	ϕ 2.8	pink	20/box
BF-D2.4X1600	2.4 X 1600	ϕ 2.8	red	20/box
BF-D2.4X1800	2.4 X 1800	ϕ 2.8	green	20/box
BF-D2.4X2300	2.4 X 2300	ϕ 2.8	orange	20/box
BF-D2.4X2700	2.4 X 2700	ϕ 2.8	purple	20/box



Un -Coated

Product Co.	Max.Insertion Portion Diameter & Working length	Minimum Working Channel (mm)	Color Code	Min.Packaging
BF-D2.4X1200U	2.4 X 1200	ϕ 2.8	red	20/box
BF-D2.4X1600U	2.4 X 1600	ϕ 2.8	green	20/box
BF-D2.4X1800U	2.4 X 1800	ϕ 2.8	blue	20/box
BF-D2.4X2300U	2.4 X 2300	ϕ 2.8	orange	20/box
BF-D2.4X2700U	2.4 X 2700	ϕ 2.8	purple	20/box

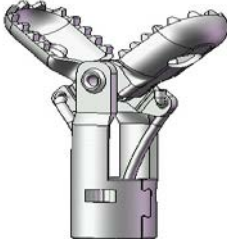
Biopsy Forceps

Single use

Large Capacity Swing Jaw Alligator Cup

Serrated. Alligator Cup

"50% Larger Cup size then the Standard Capacity Biopsy Forceps"

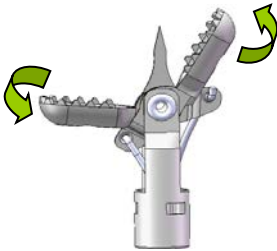


Product Co.	Max.Insertion Portion Diameter & Working length	Minimum Working Channel (mm)	Color Code	Min.Packaging
BF-E2.4X1200	2.4 X 1200	ϕ 2.8	●	20/box
BF-E2.4X1600	2.4 X 1600	ϕ 2.8	●	20/box
BF-E2.4X1800	2.4 X 1800	ϕ 2.8	●	20/box
BF-E2.4X2300	2.4 X 2300	ϕ 2.8	●	20/box
BF-E2.4X2700	2.4 X 2700	ϕ 2.8	●	20/box

Large Capacity Swing Jaw Alligator Cup w/Needle

Serrated. Alligator Cup w/Needle

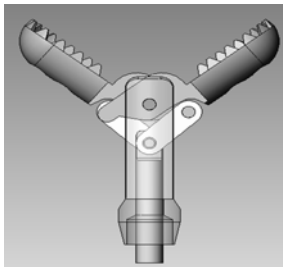
"50% Larger Cup size then the Standard Capacity Biopsy Forceps"



Product Co.	Max.Insertion Portion Diameter & Working length	Minimum Working Channel (mm)	Color Code	Min.Packaging
BF-F2.4X1200	2.4 X 1200	ϕ 2.8	●	20/box
BF-F2.4X1600	2.4 X 1600	ϕ 2.8	●	20/box
BF-F2.4X1800	2.4 X 1800	ϕ 2.8	●	20/box
BF-F2.4X2300	2.4 X 2300	ϕ 2.8	●	20/box
BF-F2.4X2700	2.4 X 2700	ϕ 2.8	●	20/box

Jumbo Capacity Alligator Cup

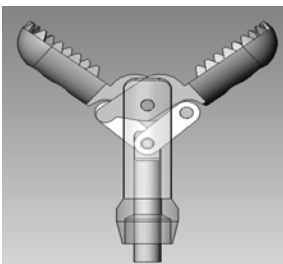
Serrated. Alligator Cup



Product Co.	Max.Insertion Portion Diameter & Working length	Minimum Working Channel (mm)	Color Code	Min.Packaging
BF-J2.8X1200	2.8 X 1200	ϕ 3.2	●	20/box
BF-J2.8X1600	2.8 X 1600	ϕ 3.2	●	20/box
BF-J2.8X1800	2.8 X 1800	ϕ 3.2	●	20/box
BF-J2.8X2300	2.8 X 2300	ϕ 3.2	●	20/box
BF-J2.8X2700	2.8 X 2700	ϕ 3.2	●	20/box

Jumbo Capacity Alligator Cup w/Needle

Serrated. Alligator Cup w/Needle

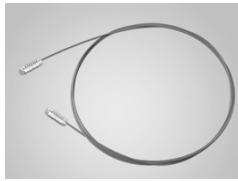


Product Co.	Max.Insertion Portion Diameter & Working length	Minimum Working Channel (mm)	Color Code	Min.Packaging
BF-K2.8X1200	2.8 X 1200	ϕ 3.2	●	20/box
BF-K2.8X1600	2.8 X 1600	ϕ 3.2	●	20/box
BF-K2.8X1800	2.8 X 1800	ϕ 3.2	●	20/box
BF-K2.8X2300	2.8 X 2300	ϕ 3.2	●	20/box
BF-K2.8X2700	2.8 X 2700	ϕ 3.2	●	20/box

Cleaning Brushes

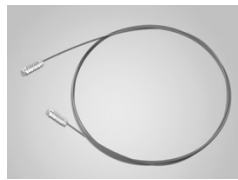
Single use

Double Ended Cleaning Brush



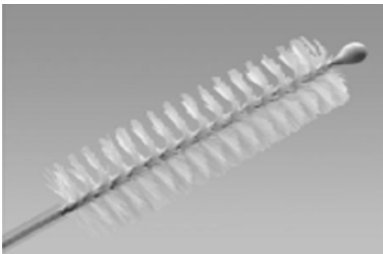
Product Co.	Brush Diameter & Working Length	Working Channel Diameter	Sterile	Min.Packaging
CL-1818EA	ϕ 5.5 x 1800 mm	2.8-4.2 mm	●	50/box
CL-1822EA	ϕ 5.5 x 2200 mm	2.8-4.2 mm	●	50/box
CL-3010EB	ϕ 3.0 x 1000 mm	2.0-2.2 mm	●	50/box
CL-2010EA	ϕ 2.0 x 1000 mm	1.2 mm	●	50/box

Double Ended Cleaning Brush Fan-Tip



Product Co.	Brush Diameter & Working Length	Working Channel Diameter	Sterile	Min.Packaging
CL-1818EG	ϕ 5.5 x 1800 mm	2.8-4.2 mm	●	50/box
CL-1818EG	ϕ 5.5 x 2200 mm	2.8-4.2 mm	●	50/box
CL-3010EH	ϕ 3.0 x 1000 mm	2.0-2.2 mm	●	50/box

Double Ended Cleaning Brush Ball-Tip



Product Co.	Brush Diameter & Working Length	Working Channel Diameter	Sterile	Min.Packaging
CL-1818EC	ϕ 5.5 x 1800 mm	2.8-4.2 mm	●	50/box
CL-1822EC	ϕ 5.5 x 2200 mm	2.8-4.2 mm	●	50/box
CL-3010ED	ϕ 3.0 x 1000 mm	2.0-2.2 mm	●	50/box
CL-2010EC	ϕ 2.0 x 1000 mm	1.2 mm	●	50/box

Cleaning Brushes

Single use

Single Ended Cleaning Brush



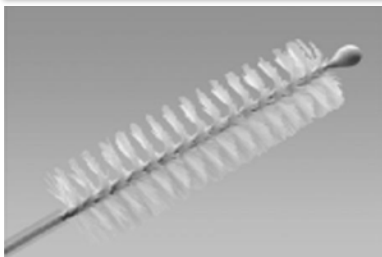
Product Co.	Brush Diameter & Working Length	Working Channel Diameter	Sterile	Min.Packaging
CL-1818DA	ϕ 5.5 x 1800 mm	2.8-4.2 mm	●	50/box
CL-1822DA	ϕ 5.5 x 2200 mm	2.8-4.2 mm	●	50/box
CL-3010DB	ϕ 3.0 x 1000 mm	2.0-2.2 mm	●	50/box
CL-2010DA	ϕ 2.0 x 1000 mm	1.2 mm	●	50/box

Single Ended Cleaning Brush Fan-Tip



Product Co.	Brush Diameter & Working Length	Working Channel Diameter	Sterile	Min.Packaging
CL-1818DG	ϕ 5.5 x 1800 mm	2.8-4.2 mm	●	50/box
CL-1818DG	ϕ 5.5 x 2200 mm	2.8-4.2 mm	●	50/box
CL-3010DH	ϕ 3.0 x 1000 mm	2.0-2.2 mm	●	50/box

Single Ended Cleaning Brush Ball-Tip

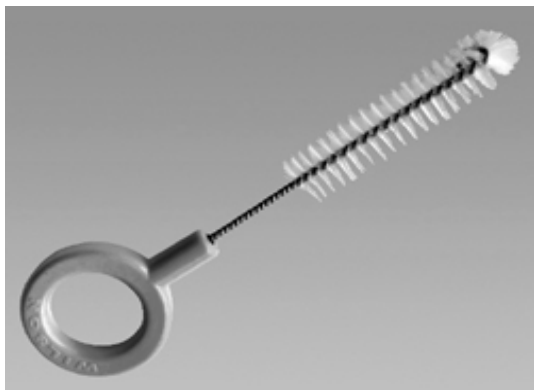


Product Co.	Brush Diameter & Working Length	Working Channel Diameter	Sterile	Min.Packaging
CL-1818DC	ϕ 5.5 x 1800 mm	2.8-4.2 mm	●	50/box
CL-1822DC	ϕ 5.5 x 2200 mm	2.8-4.2 mm	●	50/box
CL-3010DD	ϕ 3.0 x 1000 mm	2.0-2.2 mm	●	50/box
CL-2010DC	ϕ 2.0 x 1000 mm	1.2 mm	●	50/box

Cleaning Brushes

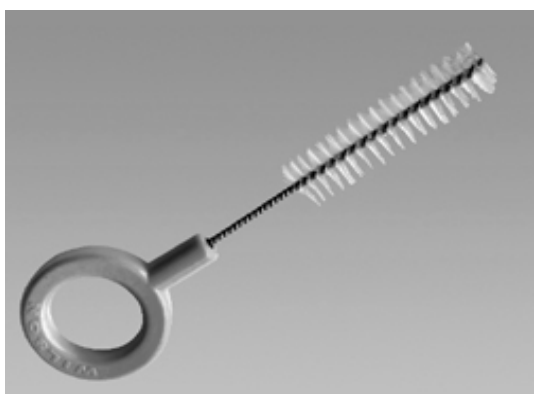
Single use

Port Hole Cleaning Brush



Product Co.	Brush Diameter & Working Length	Sterile	Min.Packaging
CL-1010P1	∅ 10 x 100 mm	●	50/box

Port Hole Cleaning Brush Fan-Tip

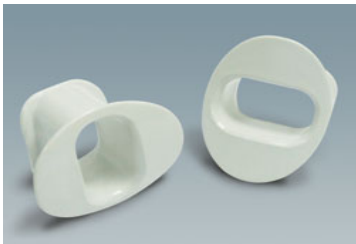


Product Co.	Brush Diameter & Working Length	Sterile	Min.Packaging
CL-1010P2	∅ 10 x 100 mm	●	50/box

Endoscope Mouthpieces

Single use

Single -Use Economy Endoscope Mouthpiece



Product Co.	Max. Size	Sterile	Min.Packaging
MB-JO-01S	16 mm	●	50/box

Single -Use Endoscope Mouthpiece



Product Co.	Max. Size	Sterile	Min.Packaging
MB-JO-02S	20 mm	●	50/box

Single -Use Endoscope Mouthpiece with Retaining Strap



Product Co.	Max. Size	Sterile	Min.Packaging
MB-JO-03S	20 mm	●	50/box

ENDOSCOPE ACCESSORIES

MEDOGEN INC.

The information presented in this brochure is intended to demonstrate a MEDOGEN product. Always refer to the package insert, product label, and/or user instructions before using any MEDOGEN product. Products may not be available in all markets. Product availability is subject to the regulatory or medical practices that govern individual markets. Please contact your MEDOGEN representative if you have questions about the availability of MEDOGEN products in your area.

Products referenced with TM designation are trademarks of MEDOGEN INC.

RFB 11/10

Copyright © 2010

MEDOGEN INC.

5731 W Howard St.

Niles IL 60714

Phone: 480-201-5255

Fax: 847-674-2820

www.MEDOGEN.com